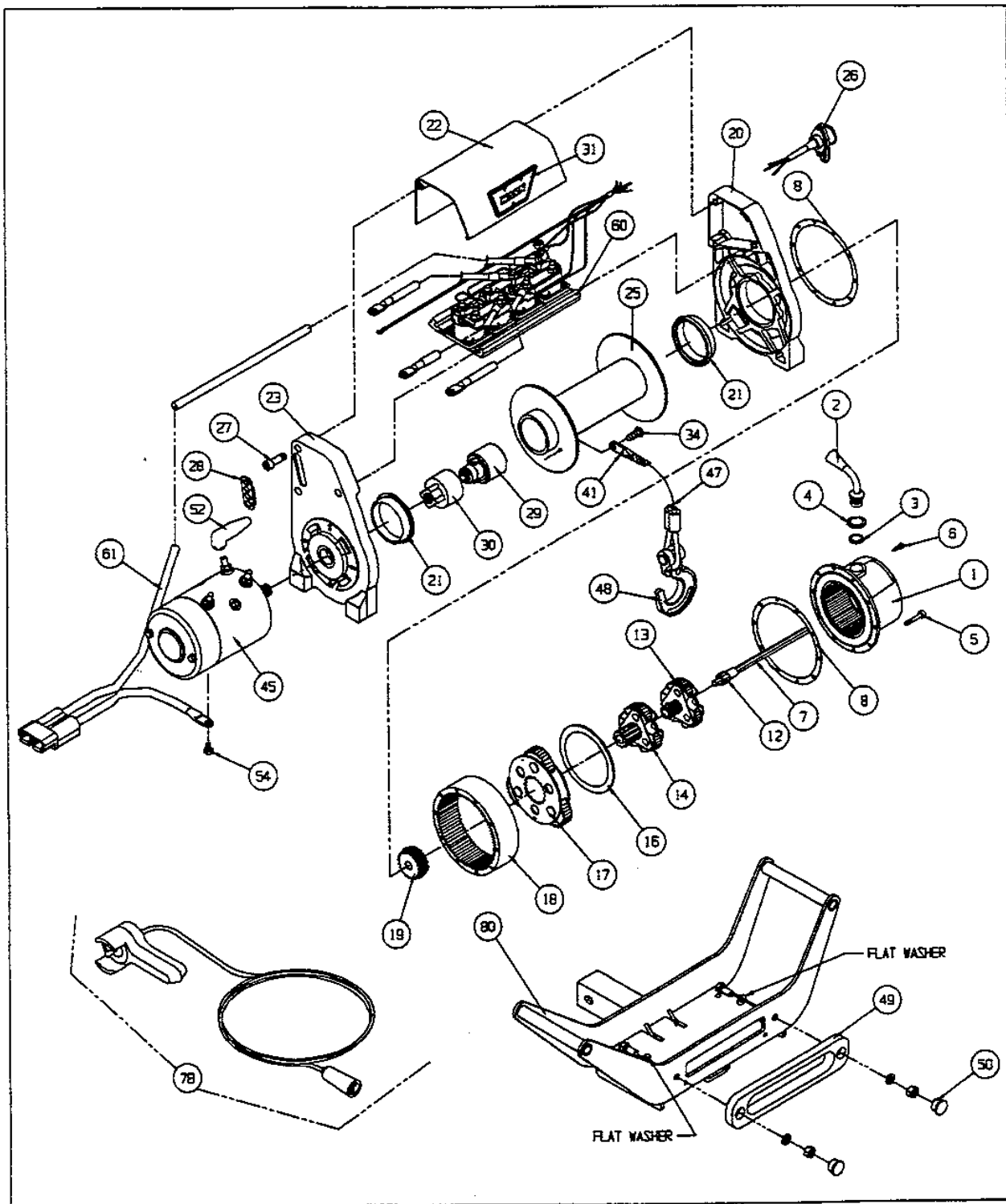


# X8000i MULTI-MOUNT

SERIAL NO. 384073 UP TO 628599



WARN X8000i WINCH MULTI-MOUNT REPLACEMENT PARTS LIST			
(P/N 31875)			
SERIAL NO. 384073 UP TO 628599			
ORDERING INFORMATION:			
When ordering please give Warn Model, Serial Number & Battery voltage.			
Part may be obtained through your local dealer or distributor.			
ITEM	QTY	PART NO	DESCRIPTION
1	1	37131	END HOUSING ASSY (INCLUDES #2)
2	1	21012	RING GEAR, SLIDING CLUTCH LEVER (INCLUDES 3, 4, & 6)
3	1		SEAL, O-RING
4	1		RETAINER, SEAL
5	10	13850	SOCKET HEAD CAPSCREW, 10-24 x 2-1/2
6	1		CLUTCH LEVER DETENT SCREW
7	1	27372	HEX SHAFT, 10.1"
8	2	13848	GASKET
12	1	13874	SUN GEAR, 12T
13	1	28430	CARRIER ASSEMBLY, STAGE 1,
14	1	28431	CARRIER ASSEMBLY, STAGE 2
16	1	13826	THRUST BEARING, GEARTRAIN
17	1	28432	CARRIER ASSEMBLY, STAGE 3
18	1	25308	RING GEAR
19	1	14584	DRIVE SPLINED W/ RETAINING RING
20	1	27352	DRUM SUPPORT, (Includes item 21)
21	2	13831	DRUM BUSHING
22	1	27323	COVER
23	1	27353	DRUM SUPPORT, MOTOR END
25	1	26107	DRUM ASSEMBLY
26	1	33247	SOCKET ASSYEMBLY
27	6	28462	SOCKET HEAD CPSR, 5/16 x 1-1/2"
28	1	27124	GROMMET
29	1	32455	BRAKE ASSEMBLY
30	1	26006	MOTOR COUPLER
31	1	27325	EMBLEM, WARN
34	1	13699	BUTTON HEAD CAPSCREW, 1/4-20 x 1/4"
41	1	16463	WIRE ROPE TERMINAL KIT
45	1	25982	MOTOR, 12V
47	1	27110	WIRE ROPE ASSEMBLY, 5/16 x 100'
48	1	5320	HOOK, 3/8" CLEVIS SLIP

WARN X8000i WINCH MULTI-MOUNT REPLACEMENT PARTS LIST			
ORDERING INFORMATION:			
When ordering please give Warn Model, Serial Number & Battery voltage.			
Part may be obtained through your local dealer or distributor.			
ITEM	QTY	PART NO	DESCRIPTION
49	1	7608	FAIRLEAD, HAWSE
50	2	32412	PLUG, PLASTIC FAIRLEAD
52	3	2090	BOOT, ELECTRICAL TERMINAL
54	1	34402	HEX HEAD CAPSCREW, M8 x 1.25 x20mm
60	1	34064	WINCH CONTROL, 12 VDC
61	1	31879	CABLE POWER, 28", 175 AMP.
78	1	38626	REMOTE CONTROL ASSEMBLY
80	1	26370	MULTI-MOUNT FRAME KIT

P/N 34068 REV D0