



# Tough Stuff Products, Inc.

## JK Hood-Rack

### **READ ALL OF THE INSTRUCTIONS BEFORE STARTING**

Check our website for any updated instructions! [www.toughstuffproducts.com](http://www.toughstuffproducts.com) >>

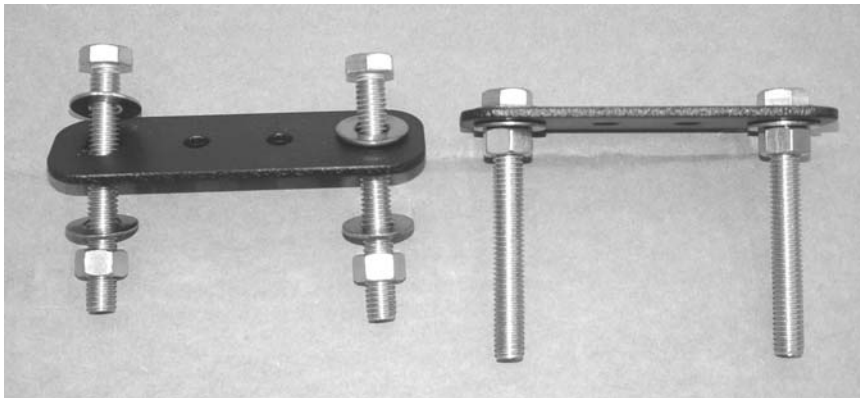
[Jeep® Accessories>> JK Hood Rack>>Installation Instructions](#)

**PLEASE NOTE:** Some photos may be of a different model Jeep Wrangler, but installation is the same.

#### **Step 1: Assemble Component Parts**

**NOTE:** The following assembly IS NOT required if you are mounting a Hi-Lift® style jack on the Hood Rack.

Assemble 4 (four) 3/8" Diameter X 3" bolts, 4 (four) 3/8" nuts and 4 (four) 3/8" washers to the Clamp Base Plate as shown in the following photograph. Tighten nuts as shown on right side.



**Step 2:** Remove 2 hinge bolts with the proper size #50 Torx® wrench. **Only do ONE side of the hood at a time!!**



**Step 3:** Fold the hinge up. You may have to tap down on the hinge to break the seal.



**Step 4:** Place Hinge Bracket in place.



**Step 5:** Fold hinge down and replace bolts, tighten securely.



Repeat steps 2-5 on the other hinge.

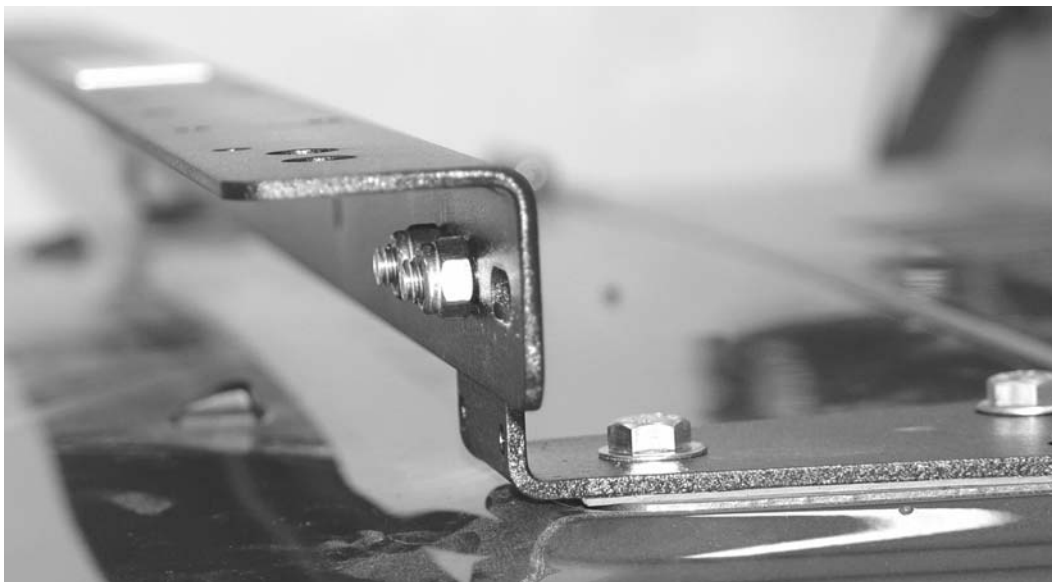
**NOTE:** This process lowers hood approx. 1/8 inch (3mm). Carefully raise and lower hood, checking for interference. None has been noted on several new vehicles, but some individual vehicle may need the hood raised slightly. To do this, a 13mm open end wrench is inserted to loosen 2 bolts at the rear of each hinge (bolts are located in slot at the rear of each hinge, see photo). These holes are slotted and the hood can be raised to a flush position.



**NOTE:** If you are installing the Lighting Kit (available separately) do that now.

**NOTE:** Use the following mounting method (Angle Bar forward) for carrying objects LESS THAN 20 POUNDS total weight. (Shovel, Axe, Pick handle, etc.) If you are going to carry a Hi-Lift ® style jack, skip down to the later instructions.

**Step 6:** Use 4 (four) 5/16" diameter X 3/4" Allen head bolts and 4 (four) 5/16" nyloc nuts to assemble the long Angle Bar to the Hinge Brackets.



Install the 2 (two) Clamp Base Plates (assembled in Step 1) on the top of the Angle Bar with 4 (four) 1/4" allen head bolts and 4 (four) 1/4" nyloc nuts as shown in the following photograph. Note there are several positions these Plates can be mounted to accommodate different tools.



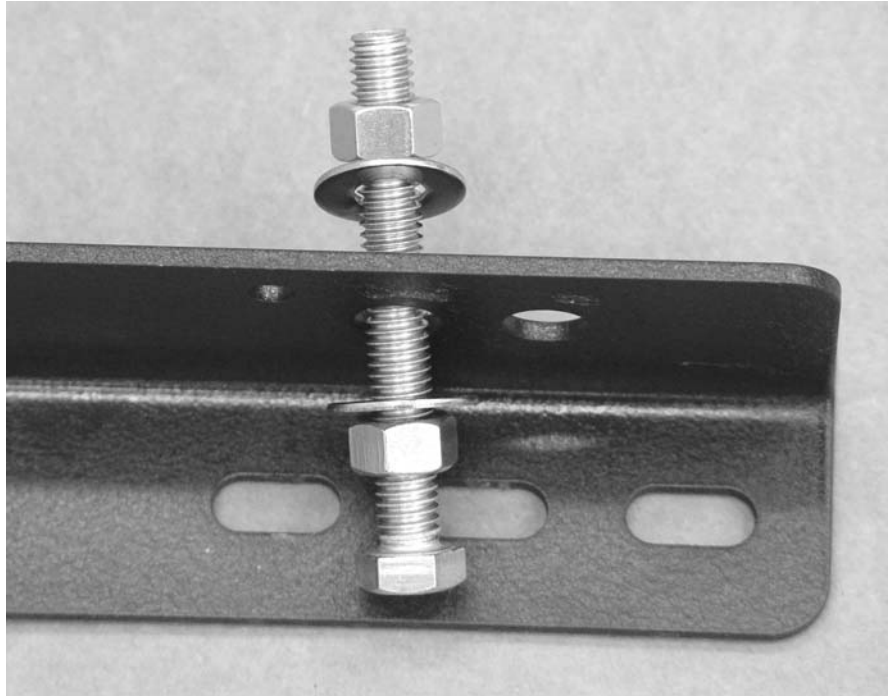
Place a Handle Clamp over the 3/8" bolts and another on top of any round or oval item you want to secure, place a 3/8" washer on each bolt and use the 3/8" Wing nuts to secure the item.



As you can see in the above photo, more than 1 item can be stacked (in this case an axe and shovel) on the Hood Rack.

**Use this method (Angle Bar rearward) for HI-LIFT ® style jacks and any other object/s over 20 POUNDS.**

**Assemble 2 (two) 3/8" Diameter X 4" bolts, 4 (four) 3/8" nuts and 4 (four) 3/8" washers as shown in the following photograph. DO NOT tighten nuts at this time.**



**Assemble the Angle Bar as depicted in the following photo; tighten the 5/16" allen head bolts securely. Tighten the 3/8" nut (finger tight only) on the UNDERSIDE of the Angle Bar so that it supports the Angle Bar by pressing downward on the head of the hood bolt. This bolt will be resting on the front Torx bolt on the 2007-newer JK Wrangler.**



**NOTE:** The bolt head **MAY NOT** line up perfectly with the hood bolt head, the bolts must line up with the Hi-Lift® jack's beam holes.

Then tighten the upper 3/8" nut to secure. This eliminates any bounce or deflection caused by the heavy weight of the Hi-Lift® style jack. Repeat for the other side.

Place a 3/8" washer over each of the 2 (two) protruding 3/8" bolts, place the jack on the Hood Rack, aligning the two protruding bolts with holes in the jack I-beam. Place another 3/8" washer on top of the jack and secure with the 3/8" Wing nuts.

**Be sure and secure the handle of the jack with a nylon tie or other method before driving!**

**Check the two wing nuts occasionally for tightness during use.**

Thank you for purchasing our product, we also manufacture many other body protection and accessory items for your vehicle, our complete product line can be viewed at [www.toughstuffproducts.com](http://www.toughstuffproducts.com).

