

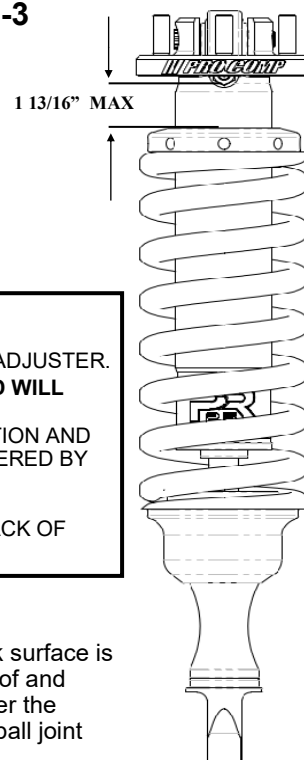


57012BX-1 INSTALL INSTRUCTIONS

400 W. Artesia Blvd Compton, CA 90220
Phone: 800-776-0767 Fax: 310-747-3912
E-Mail: info@procompusa.com

THIS COILOVER BOX CAN ONLY BE USED IN CONJUNCTION WITH PRO COMP LIFT KITS: K5047B / K5069B BOXES: 57047B-1, 57047B-2, 57047B-3

57012BX-1 BOX CONTENTS		
QTY.	PART NO.	DESCRIPTION
1	90-40981-00030	07 TUNDRA 6-7 2.5 CO DVR
1	90-40981-00050	07 TUNDRA 6-7 2.5 CO PAS
1	INST-57012BX-1	INSTRUCTIONS
1	90-6610	HARDWARE PACK
8	43FNG8I	7/16-20 HEX NUT GR8 ZINC II
8	43RLSRZ	7/16 SPLT LW ZINC PLTD
8	43RWHDI/IMP	7/16 AFTM F436 HARD WASHER-YELLOW ZINC



TECH NOTES:

1. DRIVER SIDE COILOVER HAS MORE PRELOAD THAN PASSENGER.
2. ADJUSTER DIMENSION FROM THE CHARGE PORT COUNTER BORE TO THE TOP OF THE COIL ADJUSTER. **MAX IS 1 13/16" AS SHOWN.** **⚠ WARNING: DO NOT EXCEED MAX ADJUSTMENT OR COIL BIND WILL OCCUR.** 5/16" PIN SPANNER WRENCH (54001B) **SOLD SEPARATELY.**
3. RELEASING NITROGEN PRESSURE FROM THE CHARGE PORT MAY LEAD TO SHOCK MALFUNCTION AND REDUCED RIDE QUALITY. FAILURE CAUSED BY RELEASING NITROGEN PRESSURE IS NOT COVERED BY WARRANTY.
4. RIDE TUNE OPTIMIZED FOR USE IN CONJUNCTION WITH 57012BX-2 REAR SHOCK KIT.
5. SANDING MAY BE NECESSARY AT FRONT BUMP STOP MOUNTING BRACKET CORNERS. SEE BACK OF THIS PAGE.

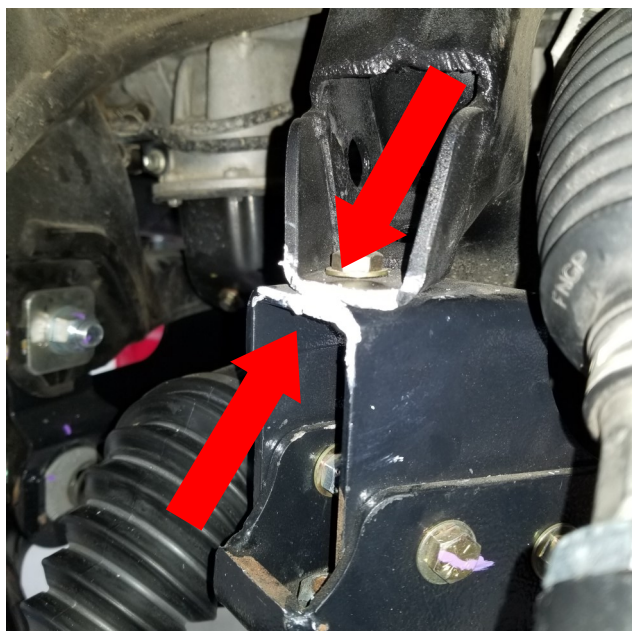
INSTALLATION:

1. If upgrading to these coilovers, ensure that your workspace is of adequate size and the work surface is level. Place the vehicle in park and set the parking brake. Place safety wheel blocks in front of and behind the rear tires. Raise front end of the vehicle using a floor jack. Place jack stands under the frame rails and lower the frame onto the stands. Remove front wheels/tires. Remove upper ball joint from knuckle, remove tie rod end from knuckle, remove sway bar link from lower control arm.
2. The billet bump stop spacers do not need to be used with these coilovers and can be removed, or not installed if a new installation, for increased up travel. See Image below (A).
3. If installing these along with a new lift kit, start at step 58 in the K5047 / K5069 instruction manual. Install driver side coilover 90-40981-00030 into the coilover bucket. Use the supplied 7/16" washers/lock washer/nuts in hardware pack 90-6610.
4. Using the factory supplied lower bolt, install the lower eyelet into the factory pocket with the larger bearing spacer forward to clear the OE pocket in the lower control arm.
5. Torque the supplied upper hardware to 45-50 ft-lbs. Torque the OE lower bolt to the OE torque specification.
6. Reinstall the upper control arm ball joint, tie rod end, and sway bar bolt. Use new cotter keys where required and torque to OE specifications.
7. Install wheel/tire. Torque lug nuts to OE torque spec.
8. Repeat on passenger side with coilover 90-40981-00050.



(A)

- Due to vehicle variations, sanding may be necessary on the front bump stop mounting bracket edges, where the vehicle's frame and aftermarket PRO COMP 6" kit crossmember bolt together. (PICTURE B) Sanding off 1/8" to 1/4" of material will prevent the coil from coming in contact with other components at full droop. See image for reference of coil in contact with frame/kit crossmember. (PICTURE C)
- If sanding is performed, clean the area thoroughly and paint the exposed metal with a good quality paint.



(B)



(C)

Notice to Owner operator, Dealer and Installer:

Vehicles that have been enhanced for off-road performance often have unique handling characteristics due to the higher center of gravity and larger tires. This vehicle may handle, react and stop differently than many passenger cars or unmodified vehicles, both on and off-road. You must drive your vehicle safely! Extreme care should always be taken to prevent vehicle rollover or loss of control, which can result in serious injury or even death. Always avoid sudden sharp turns or abrupt maneuvers and allow more time and distance for braking! Pro Comp reminds you to fasten your seat belts at all times and reduce speed! We will gladly answer any questions concerning the design, function, maintenance and correct use of our products.

Please make sure your Dealer/Installer explains and delivers all warning notices, warranty forms and instruction sheets included with Pro Comp product.

Application listings in this catalog have been carefully fit checked for each model and year denoted. However, Pro Comp reserves the right to update as necessary, without notice, and will not be held responsible for misprints, changes or variations made by vehicle manufacturers. Please call when in question regarding new model year, vehicles not listed by specific body or chassis styles or vehicles not originally distributed in the USA.

Please note that certain mechanical aspects of any suspension lift product may accelerate ordinary wear of original equipment components. Further, installation of certain Pro Comp products may void the vehicle's factory warranty as it pertains to certain covered parts; it is the consumer's responsibility to check with their local dealer for warranty coverage before installation of the lift.

Warranty and Return policy:

Pro Comp warrants its full line of products to be free from defects in workmanship and materials. Pro Comp's obligation under this warranty is limited to repair or replacement, at Pro Comp's option, of the defective product. Any and all costs of removal, installation, freight or incidental or consequential damages are expressly excluded from this warranty. Pro Comp is not responsible for damages and / or warranty of other vehicle parts related or non-related to the installation of Pro Comp product. A consumer who makes the decision to modify his vehicle with aftermarket components of any kind will assume all risk and responsibility for potential damages incurred as a result of their chosen modifications. Warranty coverage does not include consumer opinions regarding ride comfort, fitment and design. Warranty claims can be made directly with Pro Comp or at any factory authorized Pro Comp dealer.

IMPORTANT! To validate the warranty on this purchase please be sure to mail in the warranty card.

Claims not covered under warranty-

- Parts subject to normal wear, this includes bushings, bump stops, ball joints, tie rod ends and heim joints
 - Discontinued products at Pro Comp's discretion
- Bent or dented product
- Finish after 90 days
- Leaf or coil springs used without proper bump stops
- Light bulbs
- Products with evident damage caused by abrasion or contact with other items
- Damage caused as a result of not following recommendations or requirements called out in the installation manuals
- Products used in applications other than listed in Pro Comp's catalog
- Components or accessories used in conjunction with other manufacturer's systems
- Tire & Wheel Warranty as per Pro Competition Tire Company policy
- Warranty claims without "Proof of Purchase"
- Pro Comp 2.5 / 2.75 coilover and 2.0 / 2.5 monotube shocks are considered a serviceable shock with a one-year warranty against leakage only. Rebuild service and replacement parts will be available and sold separately by Pro Comp. Contact Pro Comp for specific service charges.
- Pro Comp accepts no responsibility for any altered product, improper installation, lack of or improper maintenance, or improper use of our products.

<p><u>PLACE</u> <u>WARRANTY REGISTRATION</u> <u>NUMBER</u> <u>HERE:</u> _____</p>
