



Chevrolet "OE" Style[®] Fender Flares Set of 4

Set Part #40936-02

Rev-5 03/24/2015

For complete fitment info visit : www.bushwacker.com

STEP 1 – PRIOR TO INSTALLATION

- A) Bushwacker only approves installing the flares according to these written instructions with the hardware provided. WARNING:** Failure to install according to these instructions will invalidate the warranty. This includes, but is not limited to using alternative installation methods, hardware, or materials. **DO NOT USE:** Loctite, SuperGlue, or similar products on the hardware or the flares.
- B) Fit:** Verify the fit of the flares to vehicle. (Some filing, sanding, or cutting may be necessary to ensure proper fit).
- C) Painting:** (Optional) if paint is desired it must be done prior to installing flares on vehicle. Clean outer surface with a good grade degreaser. **DO NOT USE LACQUER THINNER OR ENAMEL REDUCER AS A DEGREASER.** Wipe outer surface thoroughly with a tack rag prior to paint. Application of plastic adhesion promoter for ABS plastic as per your paint system manufacturer's recommendations is required. Paint flares using a high quality enamel, or polyurethane automotive paint. If painting edge trim (not recommended), use a flex additive.
- D) Performance:** Using larger Tires may increase the area required to turn the vehicle. Some Tire/Rim combinations may require lowering bump stops and or installing steering stops to prevent tire from contacting flare.
- E) Exhaust System:** Modifications may be necessary to maintain a minimum 4" clearance between flares and exhaust pipes. (Exhaust gases should not vent directly onto flares)
- F) Metal Protection:** All exposed fasteners and bare metal should be treated with rust resistant paint **BEFORE** installing flares. Spray inner fender wells with undercoating **AFTER** flare attachments have been completed.
- G) Decals:** Flares may interfere with existing decals on vehicle. If you wish, remove decals prior to installation of flares.





TOOLS FOR EASY INSTALLATION:

- 9/32" Socket
- Flat Head Screwdriver
- Grease Pencil
- Alcohol Wipes
- Drill
- 5/16" Drill Bit

LIMITED LIFETIME WARRANTY AGAINST ANY MANUFACTURING DEFECTS

- To claim a warranty, you must provide Proof of Purchase.

Included in Hardware Kit:

- | | | | | | | | |
|----|---|----|---|----|---|----|---|
| 1. |  | 2. |  | 3. |  | 4. |  |
| | AD1-0010,
LARGE ALCOHOL
PREP PAD,
2 pcs | | ET1-0002,
Edge Trim Tool,
1 pc | | GP1-0005,
Large Wiper Style
Edge Trim,
327 inches | | RV1-P006,
8 x 20mm Black
Nylon Retainer,
14 pcs |

STEP 2 - EDGE TRIM INSTALLATION

A. Peel two to three inches of red vinyl backing away from Edge Trim (GP1-0005) tape. Applying the adhesive side of the edge trim to the inner side of the flare, affix the edge trim to the top edge of the flare (the portion that comes in contact with the vehicle).

B. Press edge trim into place along the top edge of the flare in one-foot increments, pulling red vinyl backing free as you continue to work your way around the top edge of the flare.



Front Flare Installation Procedures (Driver's Side):



Using a 9/32" socket, remove two factory screws. Retain screws for later use.



Holding flare in position on fender, install two supplied Plastic Push Retainers.



Plastic Push Retainer locations.



Reinstall factory screws removed in Step 1.



Using hole located in forward portion of flare as a guide, drill through the splash shield with a 5/16" bit. Holes in flare and splash shield should align with factory hole located in fender.



Install a supplied Plastic Push Retainer through forward hole in flare.

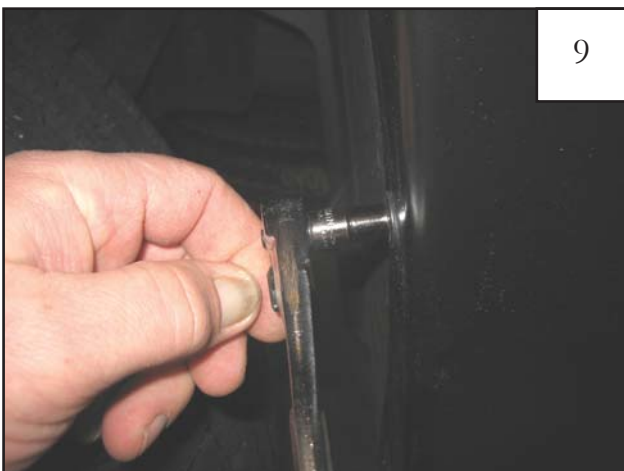
Rear Flare Installation Procedures (Driver's Side):



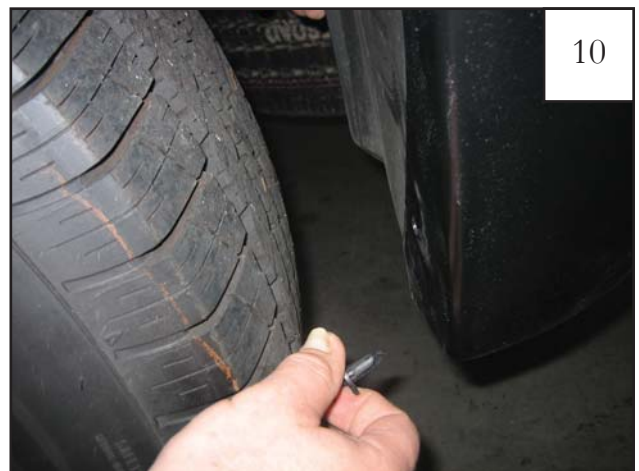
Using a flat head screw driver, remove one factory plastic retainer and discard.



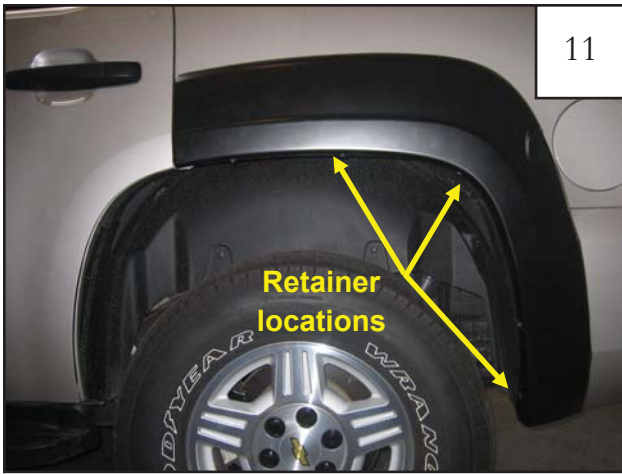
Using a 9/32" socket, remove two factory screws. Retain screws for later use.



Holding flare in position on fender, reinstall factory screws removed in Step 8.

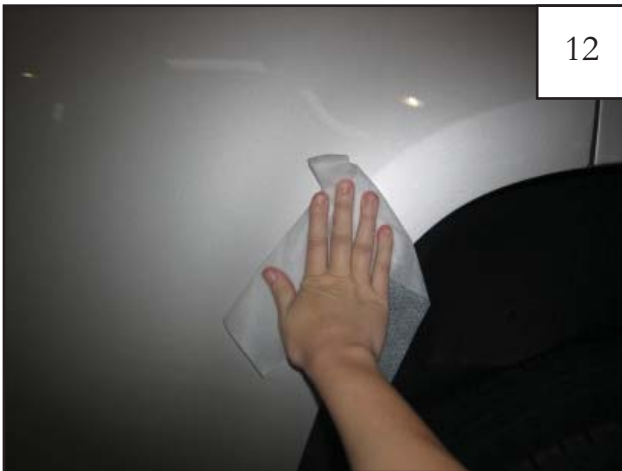


Install three supplied Plastic Push Retainers in remaining holes in flare.



Push Retainer locations.

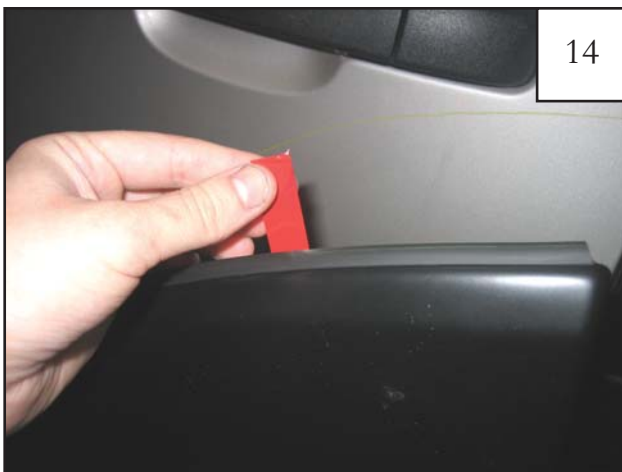
Rear Door Piece Installation Procedures (Driver's Side):



Using a supplied alcohol wipe, clean the area where the door piece will be installed.



Peel the red liner entirely from the CENTER tape pad. Peel 2" of liner from each of the other two tape pads, folding out to form tabs.



Hold the part at an angle to prevent tape from prematurely sticking, and align part on the door. Make sure liner is protruding from part for ease of removal.



Confirm placement of the part. Gently pull the tape liner from the tape, starting with the top tab you created.

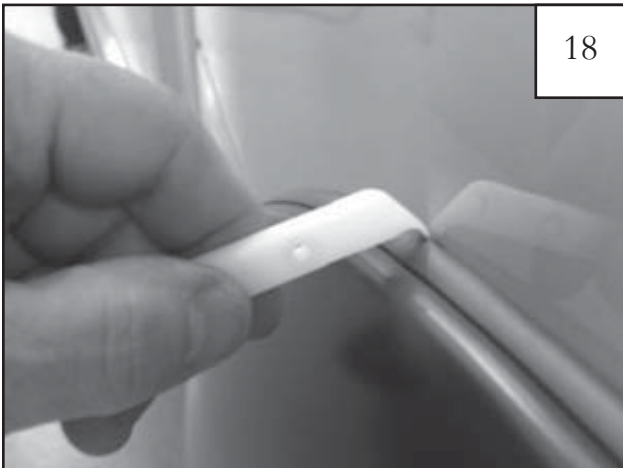


Open the door and gently pull the bottom tape tab you created.



Apply firm pressure to taped areas for proper bond. Tape reaches maximum adhesive bond after 24 hours of contact. Do not wash vehicle until 24 hours have passed.

Edge Trim Tool Procedures:



Using supplied Edge Trim Tool, seat edge trim against vehicle by hooking curved end under edge trim at one end of flare. Next, slide around outer edge of flare to the other end.



Using flat end of supplied Edge Trim Tool, seat edge trim against flare by inserting straight end between edge trim and flare at one end. Next, slide around entire edge to the other end.