

**CJ-7**  
/ **YJ**

## FRONT KITS: BRCYJ76F

**Jeep Wrangler CJ-7/YJ BedRug  
Interior Installation Instructions**

**BEDRUG**   
PREMIUM LINER FOR JEEP®

*Congratulations on choosing the finest interior flooring kit available for your Jeep. The BedRug material is mold and mildew resistant, easily cleaned with water & household cleaning chemicals and extremely resistant to most chemicals.*

- **Kit Contents:** Driver side front floor, passenger side front floor, rear passenger floor, trans hump piece, side panel right and left, A-pillar right and left, heat shield material, hardware kit, and instruction sheet.
- **Tools needed:** Phillips screwdriver, utility knife, soap, water, and rubbing alcohol.



## PREPARATION

1. Read all instructions before beginning installation.
2. Remove console and old Jeep flooring material (if equipped).
3. Wash and dry the floor pan areas thoroughly.
4. Cut the hook with tape backing, provided in the hardware kit, to the lengths indicated on drawing (page 5). Place the loop onto each location. Do not remove the tape backing at this time. (Note: Cut the longest pieces first.)
5. Pre-install provided heat shields on underside of the three front pieces in areas shown below, using the locator marks. (Fig. 1 thru 3)

**IMPORTANT:** Jeep floor should be at least 68°F (20°C) for maximum adhesion. Clean all areas with rubbing alcohol before applying tape. When removing backing, do not touch adhesive. If both front and rear kits were purchased be sure to install the rear cargo area first. *If the Jeep has any aftermarket accessories or custom parts such as seats brackets or roll bars you may need to trim our product to fit.*



FIGURE 1:

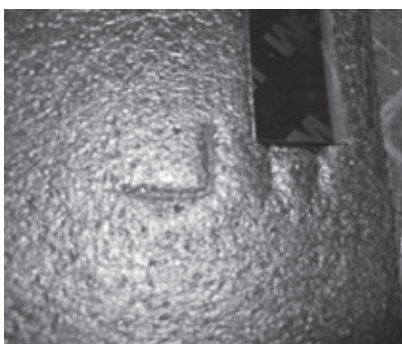


FIGURE 2:

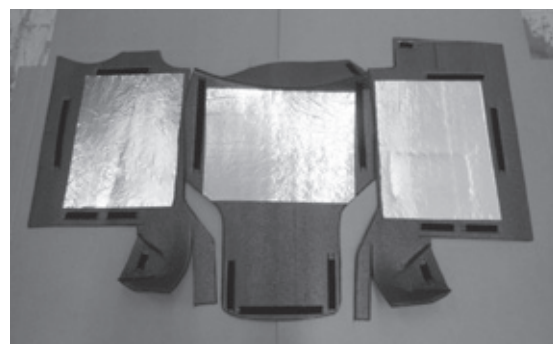
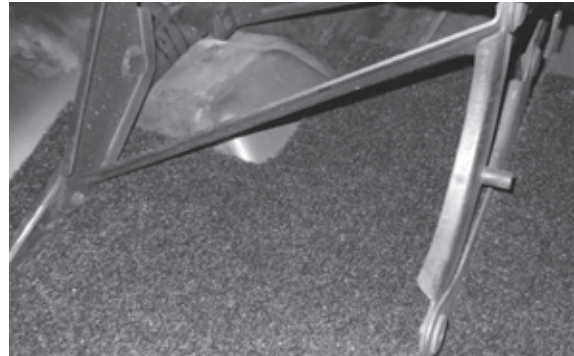


FIGURE 3:

## INSTALLING MIDDLE FLOOR PIECE

- Adjust the front seats to the fully forward and tilted up (passenger entry) position. Next place the rear floor piece into place. (Fig. 4 and Fig. 5)
- Cut slits for the floor mounted seat belts to pass thru using indicator lines on the underside of the rear floor piece, and push seat belts thru as shown. If equipped with factory plastic seat belt covers, cut holes to accomodate. (Fig. 6 and Fig. 7)

**FIGURE 4:****FIGURE 5:****FIGURE 6:****FIGURE 7:**

- Next pull back the floor piece to access the hook fastener. (Fig. 8) Clean surface with alcohol then remove the film backing from both pieces and roll the floor back into place. Firmly press the top surface to ensure adhesive attachment, repeat as necessary until all pieces are attached.

**FIGURE 8:****FIGURE 9:**

## INSTALLING FRONT FLOOR PIECES

- Adjust the front seats to the rear most position to allow maximum clearance for installation.  
Place front floor pieces into place. (Fig. 10)
- Once properly aligned, pull back part to access the hook fastener (Fig. 11). Clean surface with alcohol then remove the film backing and roll the part back into place. Firmly press the top surface to ensure adhesive attachment. Repeat for other front floor piece.

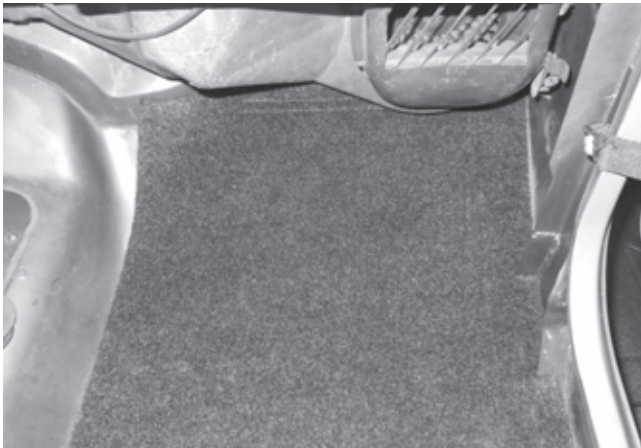


FIGURE 10:



FIGURE 11:

- Next install the trans hump piece. Cut slits to fit piece over floor shifters as shown. (Fig. 12)  
Once surface is clean, start on one side and remove film backing and fit into place ensuring that the trans hump piece fits against the floor piece without a gap. (Fig. 13) Then repeat for other side.



FIGURE 12:



FIGURE 13:

## INSTALLING FRONT FLOOR PIECES

12. Clean the side panel surfaces with alcohol, then remove film backing and install pieces as shown. (Fig. 14 -17) Repeat for opposite side.



FIGURE 14:



FIGURE 15:



FIGURE 16:



FIGURE 17:



COMPLETED INSTALLATION



**BOTTOM VIEW (FOAM SIDE)**  
**BRCJ76F HOOK INSTALLATION**

CUT PROVIDED HOOK WITH TAPE BACKING TO THE SAME SIZE AS THE LOOP SEWN ONTO THE UNDERSIDE OF EACH FRONT PIECE. USE PRECUT 1 X 2 PIECES WHERE INDICATED.

